



**SOUTHEAST ALASKA
FISH HABITAT
PARTNERSHIP**



Southeast Alaska Fish Habitat Partnership

coordinator@sealaskafishhabitat.org

www.seakfhp.org

National Fish Habitat Board Meeting – March 10, 2014



SOUTHEAST ALASKA FISH HABITAT PARTNERSHIP



Introductions:

- Neil Stichert - USFWS Juneau Field Office, SEAKFHP Steering Committee Chair
- Roger Harding – Alaska Department of Fish and Game (ADF&G), SEAKFHP Steering Committee member and ADF&G Liaison to all Alaska FHPs
- Deborah Hart – SEAKFHP Coordinator
- David Wigglesworth – USFWS – Region 7, Regional Coordinator



Southeast Alaska Fish Habitat Partnership

Milestones:

2010 – Working Group Forms

- Hosts formal session at AFS AK Chapter meeting - November

2011 – Candidate FHP Status Attained and Initial Coordination Funding Secured

- Working group hosts Fish Passage Workshop – April
- Candidacy recognized by NFH Board – August
- Matching grant funds secured and AKSSF grant awarded - December

2012 – SEAKFHP Formalizes

- Coordinator hired – April
- SEAKFHP Steering Committee formed – Summer
- Bylaws and governance structure adopted – August
- Regional coordination and funding facilitation services provided - Fall
- Strategic planning effort begins - October

2013 – SEAKFHP Matures as Fully Functioning FHP

- SEAKFHP Science and Data committee established, outreaches to National S&D Committee, tests project endorsement process – January thru Spring
- SEAKFHP makes formal presentation to NFH Board – June and WAFWA IMFC – July
- SEAKFHP draft initial strategic action plan and provides regional review in conjunction with the 2013 SE AK Watershed Symposium - Fall
- Co-hosts this symposium with the Southeast Alaska Watershed Coalition - November

2014 – SEAKFHP Applies for NFH Board Recognition

- SEAKFHP incorporates regional review into draft strategic action plan - January
- Completes NFHP recognition application – January
- SEAKFHP presents to NFH Board at March meeting



SOUTHEAST ALASKA FISH HABITAT PARTNERSHIP



Presentation Objectives:

- Provide brief overview of the candidate Southeast Alaska Fish Habitat Partnership (SEAKFHP)
- Share geographically and regionally unique attributes of Southeast Alaska
- Demonstrate how the SEAKFHP has risen to become a robust candidate Partnership
- Introduce our draft strategic plan and request feedback
- Respond as needed to general questions from the NFH Board



Southeast Alaska Fish Habitat Partnership

Overview:

SOUTHEAST ALASKA FISH HABITAT PARTNERSHIP
 419 6th Street, Suite 200
 Juneau, Alaska 99824
 (907) 723-0258
 www.seakfhp.org

Vision
 Our partners share a common vision to ensure healthy, thriving habitats that support all life stages of resident, anadromous, estuarine and marine-dependent fishes across their historical range in Southeast Alaska.

Mission
 We work to support cooperative fish habitat conservation, restoration and management across Southeast Alaska with consideration of economic, social and cultural interests of local communities in our endeavors.

Geographic Scope
 Our partnership encompasses the lands, freshwaters, estuaries, nearshore areas, marine ecosystems and communities of Southeast Alaska. It is defined as extending from Dixon Entrance at the South, to Cape Suckling in the North, eastward to the U.S. border, and includes all associated lands, freshwater and marine waters in between.

Core Partnership Functions

- Grow diversity and capacity of the partnership linking natural resource science and management with regional interests, local and traditional values and community needs
- Build organizational strength & perseverance of the partnership for long-term sustainability and functionality
- Provide services to partners that foster regional cooperation and understanding and result in improved on-the-ground conservation efforts across Southeast Alaska
- Facilitate regionally relevant fish habitat conservation strategies across Southeast Alaska - specific conservation priorities are to protect fish habitat in freshwater systems, estuaries and the nearshore/marine areas of Southeast Alaska, maintain and restore water quality and quantity in the region, and restore and enhance fragmented and degraded fish habitats in impacted areas.

Growing Partner Network
 Southeast Alaska Watershed Coalition – Sitka Conservation Society – Trout Unlimited – The Nature Conservancy
 Alaska Department of Fish and Game – City and Borough of Yakutat – Alaska Department of Environmental Conservation
 US Fish and Wildlife Service – NOAA – US Forest Service – Central Council Tlingit Haida Indian Tribes of Alaska

For More Information Contact
 Southeast Alaska Fish Habitat Partnership
 Deborah Hart, Coordinator
 907-723-0258
coordinator@sealakefishhabitat.org
www.seakfhp.org

The SEAKFHP is a candidate partnership recognized by the National Fish Habitat Board and follows guidelines set out in the National Fish Habitat Action Plan. More information at www.fishhabitat.org

NATIONAL FISH HABITAT PARTNERSHIP

STRATEGIC ACTION PLAN 2014–2016
 DRAFT VERSION 1.9 January 10, 2014

SOUTHEAST ALASKA FISH HABITAT PARTNERSHIP
 Supporting Cooperative Fish Habitat Conservation in Southeast Alaska

NATIONAL FISH HABITAT PARTNERSHIP

The SEAKFHP is a candidate partnership recognized by the National Fish Habitat Board and follows guidelines set out in the National Fish Habitat Action Plan. More information at www.fishhabitat.org



SOUTHEAST ALASKA FISH HABITAT PARTNERSHIP



Current Partners

- U.S. Fish and Wildlife Service
- NOAA
- U.S. Forest Service
- Alaska Department of Fish and Game
- Alaska Department of Environmental Conservation
- Central Council Tlingit Haida Indian Tribes of Alaska
- City and Borough of Yakutat
- Southeast Alaska Watershed Coalition
- Trout Unlimited
- The Nature Conservancy
- Sitka Conservation Society
- University of Alaska Southeast





Southeast Alaska Fish Habitat Partnership

Participating Members

Steering Committee Members

- Neil Stichert*, US Fish and Wildlife Service, Juneau Field Office – SEAKFHP Co-chair
- Mark Kaelke, Trout Unlimited – SEAKFHP Co-chair
- Cindy Hartmann Moore*, NOAA NMFS Alaska Region, Office of Habitat Conservation (S&D Co-chair)
- Sheila Jacobson*, USFS Tongass National Forest
- Roger Harding*, Alaska Department of Fish and Game
- Brock Tabor*, Alaska Department of Environmental Conservation
- Norman Cohen, The Nature Conservancy
- Jessica Kayser, Southeast Alaska Watershed Coalition
- Raymond Paddock, Central Council Tlingit and Haida Indian Tribes of Alaska
- Bill Lucey, City and Borough of Yakutat
- K Koski*, At-large seat

Science and Data Committee Members*

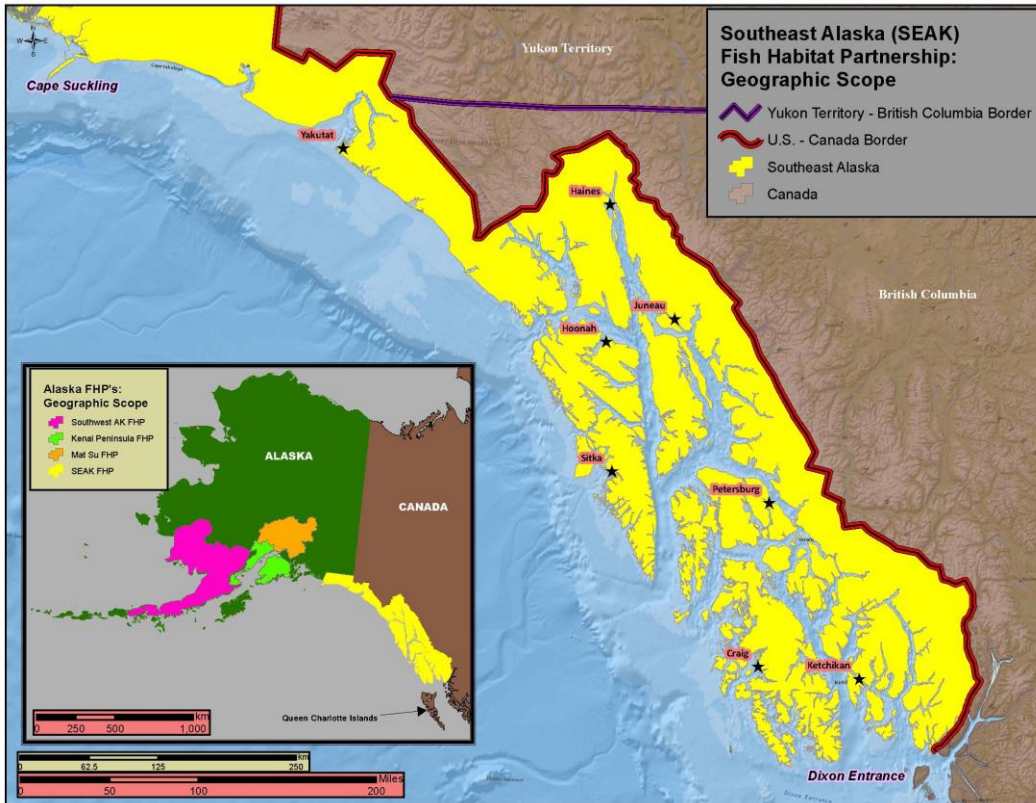
- Jeff Nichols, Alaska Department of Fish and Game (S&D Co-chair)
- Gretchen Pikul, Alaska Department of Environmental Conservation
- Julianne Thompson, USFS Tongass National Forest
- Dave D'Amore, USFS Pacific Northwest Research Station, Juneau Forestry Sciences Laboratory
- Christine Woll, The Nature Conservancy
- Brad Ryan, Takshanuk Watershed Council
- Katharine Miller, NOAA NMFS Alaska Fisheries Science Center
- Allison Bidlack, Alaska Coastal Rainforest Center
- Shannon Atkinson, University of Alaska Fairbanks
- Kim Homan, University of Alaska GIS Library
- Scott Harris, Sitka Conservation Society
- Bill Hanson (USFWS) liaison to the North Pacific Landscape Conservation Cooperative



Southeast Alaska Fish Habitat Partnership

Geographic Scope

- Watersheds and waterways connecting Icy Bay to Dixon Entrance
- Lakes, rivers, estuaries and nearshore/ marine areas



Southeast Alaska

A complex landscape and biogeography



- Largest contiguous mature coastal temperate rainforest in the nation, home to the Tongass National Forest
- Covers nearly 45,000 mi², including 12,000 mi² of marine waters, with a shoreline length > 16,000 miles
- Freshwater habitats abound, including > 20,000 lakes and ponds
- Tides range -4 to +21 feet
- 30- 160" of rainfall
- >1,000 named islands
- > 5,000 mapped anadromous fish streams

People and Economy of Southeast Alaska

- 33 communities- Only three connected to mainland road system
- Multi-cultural- Tlingit, Haida, Tshimshian
- 70% of population lives in Juneau, Ketchikan, and Sitka
- 1,500,000 tour visitors each year



Economy:

- Fishing
- Tourism
- Government
- Mining
- Timber Harvest & Silviculture



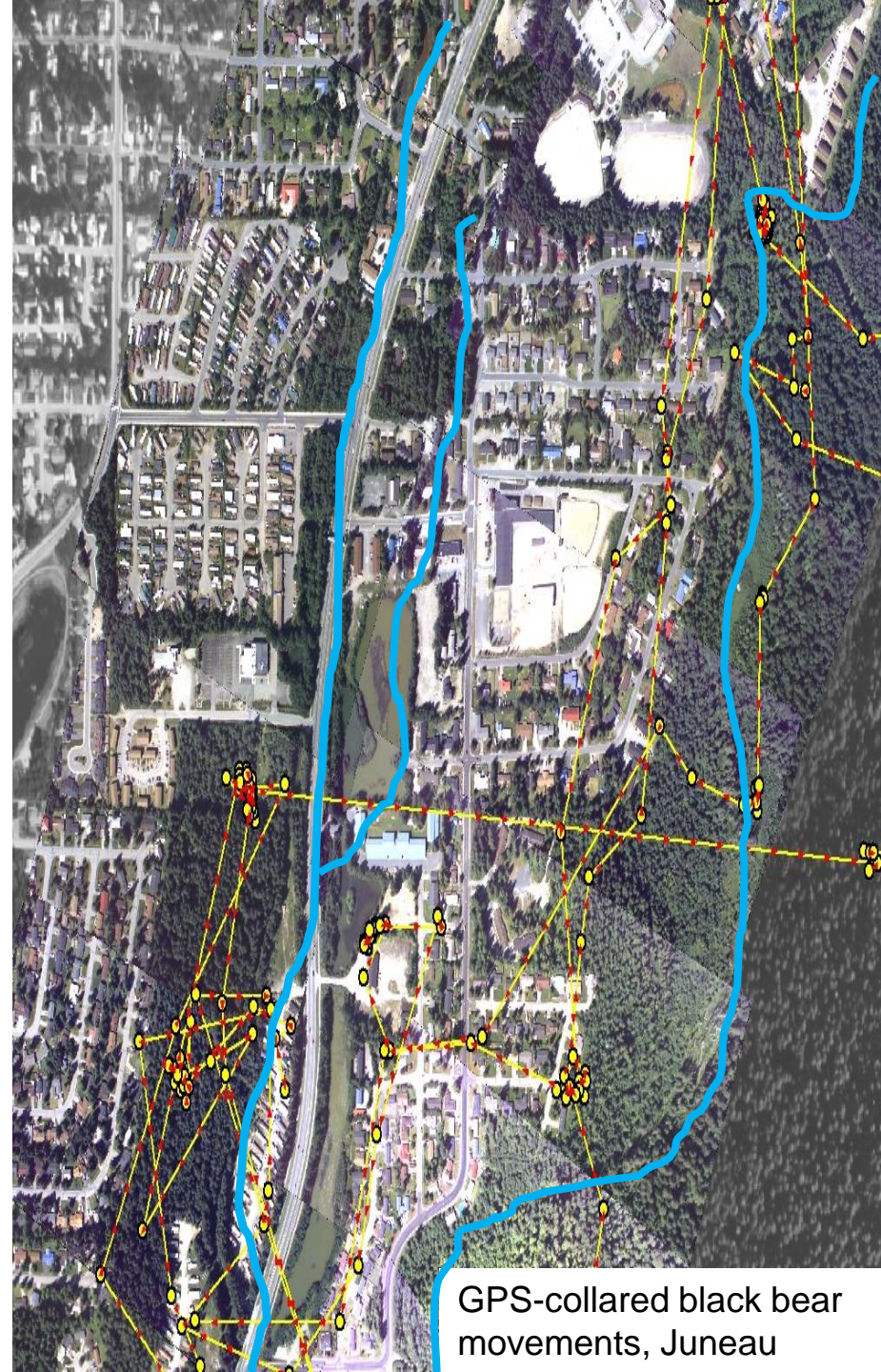
A Region of People With Strong Connections to Fish

- 96% of Alaskans surveyed say salmon are essential to the Alaskan way of life.
- Human Use of Salmon
 - Nearly 90% of rural households in Southeast Alaska use salmon.
 - On average, a rural resident uses 75 pounds of pink, chum, coho, Chinook, and sockeye salmon
- Robust subsistence, sport and commercial fisheries support this economy with use values exceeding \$466,000,000 annually in Southeast.



Aquatic Habitat Challenges in Southeast Alaska

- Development encroachment on riparian corridors and streams
- Storm water discharge into salmon streams
- Weak regulatory climate for wetland and stream protection
- Fish passage barriers (1,200+)
- Post industrial logging landscape- 400,000 acres – state, federal, and private
- Existing and expanded mining activities and exploration
- Climate change



GPS-collared black bear movements, Juneau

Risks and Stressors to Fish Habitat in Southeast Alaska

- Changing Environmental Conditions
- Habitat Loss
- Loss of Habitat Connectivity and Complexity
- Degraded Water Quality and Quantify
- Ecosystem Imbalance
- Fishing Pressure
- Mariculture, Aquaculture and Hatcheries

Appendix 2. Recognized risks and associated stressors to fish in key habitat areas across Southeast Alaska identified as part of SEAKFHP's initial strategic planning effort, this list will be refined and used in future efforts to refine the partnership's conservation strategy.

Risks and associated stressors to fish habitat	Freshwater Headwaters	Freshwater Floodplains	Estuarine Ecosystems	Nearshore-Marine Ecosystems
Changing Environmental Conditions				
global climate change	X	X	X	X
ocean acidification			X	X
catastrophic events	X	X	X	X
tsunami debris			X	X
Habitat Loss				
urban/community development		X	X	X
shoreline dredge and fill			X	X
Loss of Habitat Connectivity and Complexity				
timber harvest and logging practices	X	X	X	X
energy development via hydro/tidal projects	X	X	X	X
road/stream crossings	X	X	X	
Degraded Water Quality and/or Quantity				
mining development	X	X	X	X
contaminated sites	X	X	X	X
marine vessel transportation contaminates			X	X
mixing zone contaminates	X	X	X	X
alteration of hydrology	X	X	?	?
Ecosystem Imbalance				
introduction and persistence of invasive species	X	X	X	X
algal blooms			X	X
Fishing Pressure	?	X	X	X
Mariculture, Aquaculture & Hatcheries	?	?	X	X

Appendix 2 of the SEAKFHP Strategic Action Plan, found on page 29

Why Another Partnership in Alaska?

- Complex geography
- Professional expertise dispersed across the region
- Interjurisdictional management of fish habitat, riparian areas, flows, watersheds and forestlands
- High public interest in maintaining fisheries
- Declining budgets
- NFHP construct gets people to the table



Southeast Alaska Fish Habitat Partnership

Accomplishments:

- Organizational Development
 - Broad partner support
 - Formal Governance Structure
 - Functioning Committees
 - Funding Support
 - Strong NFHP relationships
- Partner Services
 - Promoting Regional Discussions
 - Elevating Regional Assessments and Guidance Documents
 - Robust Website and Data Archive
 - Public Events
 - Project Endorsements
- Strategic Action Plan
 - Promoting Regional Conservation Priorities

SALMON 2100:
The Future of Wild Pacific Salmon

FRIDAY
NOVEMBER 9, 2012
Social: 4:30—5:30PM
Presentation: 5:30—6:30PM

CENTENNIAL HALL
JUNEAU, ALASKA

Event Sponsored by:
Southeast Alaska
Fish Habitat Partnership

For more information contact:
Coordinator@SEAlaskaFishHabitat.org
Partners of the SEAKFHP include: Trout Unlimited, The Nature Conservancy, Southeast Alaska Watershed Coalition, USFWS, NOAA, USFS, ADH&G, ADEC.
Become a Partner too!

The Southeast Alaska Fish Habitat Partnership is proud to sponsor a provocative conversation on the future of salmon populations in Alaska. Speaker: Dr. Robert Lackey is a professor of fisheries science and adjunct professor of political science at Oregon State University. In his co-edited anthology *Salmon 2100*, diverse authors grapple with the single question of what is it really going to take to have wild salmon populations through 2100? Dr. Lackey will share a retrospective look at the Salmon 2100 project and offer his vision on policy, social changes and restoration practices providing instructive insights to wild salmon preservation with closing thoughts on how these apply to salmon populations in Southeast Alaska.

CONNECT INFORM PARTICIPATE

The Southeast Alaska Watershed Symposium

Join the Southeast Alaska Watershed Coalition and the Southeast Alaska Fish Habitat Partnership for focused sessions promoting informed aquatic resource management and effective fish habitat conservation activities in SE Alaska

SOUTHEAST ALASKA FISH HABITAT PARTNERSHIP

SOUTHEAST ALASKA WATERSHED COALITION

alaskawatershedcoalition.org
alaskawatersheds@gmail.com
seakfhp.org
coordinator@sealaskafishhabitat.org

A Framework for Setting Watershed-Scale Priorities for Forest and Freshwater Restoration
Prize of Wales Island

Watershed Condition Classification Technical Assessment and associated watershed condition class rating
Ketchikan, AK: Tongass National Forest.

U.S. Forest Service. 2008. Tongass Land and Resource Management Plan: Final Environmental Impact Statement Plan Amendment.

Alaska Department of Fish and Game. 2006. Our Wealth Maintained: A Strategy for Conserving Alaska's Diverse Wildlife and Fish Resources. Alaska Department of Fish and Game, Juneau, Alaska. Xlii+824p.



Southeast Alaska Fish Habitat Partnership

Core Functions

- Grow diversity and capacity of partnership
- Develop organizational strength and perseverance
- Provide services to partners and Southeast communities
- Develop regionally relevant fish habitat conservation strategies



Southeast Alaska Fish Habitat Partnership

Partner Services

- Foster interagency & regional communication
- Facilitate regional funding opportunities
- Provide project technical review and endorsement
- Support regional assessment and data sharing
- Coordinate relevant conservation strategies for protection, enhancement, and restoration of fish habitat
- Provide annual symposium and event facilitation





Goal: Facilitate regionally-relevant strategies to support cooperative fish habitat conservation and management in Southeast Alaska

- Overview
- Vision & Mission
- Fact Sheet
- Partners +
- Steering Committee
- Documents

Southeast Alaska Fish Habitat Partnership

Objectives

- o information sharing
- o interagency and partner coordination and collaboration
- o strategic funding facilitation/allocation

Our Purpose

We formed to bring together local communities, non-profit organizations, state and federal agencies, and residents to conserve fish habitat across Southeast Alaska utilizing coordinated strategies and local partnership actions ... [\(read more\)](#)



Welcome! We're glad you're here-

The Southeast Alaska Fish Habitat Partnership works to foster **cooperative fish habitat conservation** in freshwater, estuarine and marine ecosystems across the **southern panhandle of Alaska** including the dynamic watersheds and waterways that make up the

The success of our efforts relies on the breadth and common focus of our partners

[Join the Partnership](#)



Southeast Alaska Fish Habitat Partnership

Web Site and Resources Archive at www.seakfhp.org

Regional Data Repositories and Resource Providers

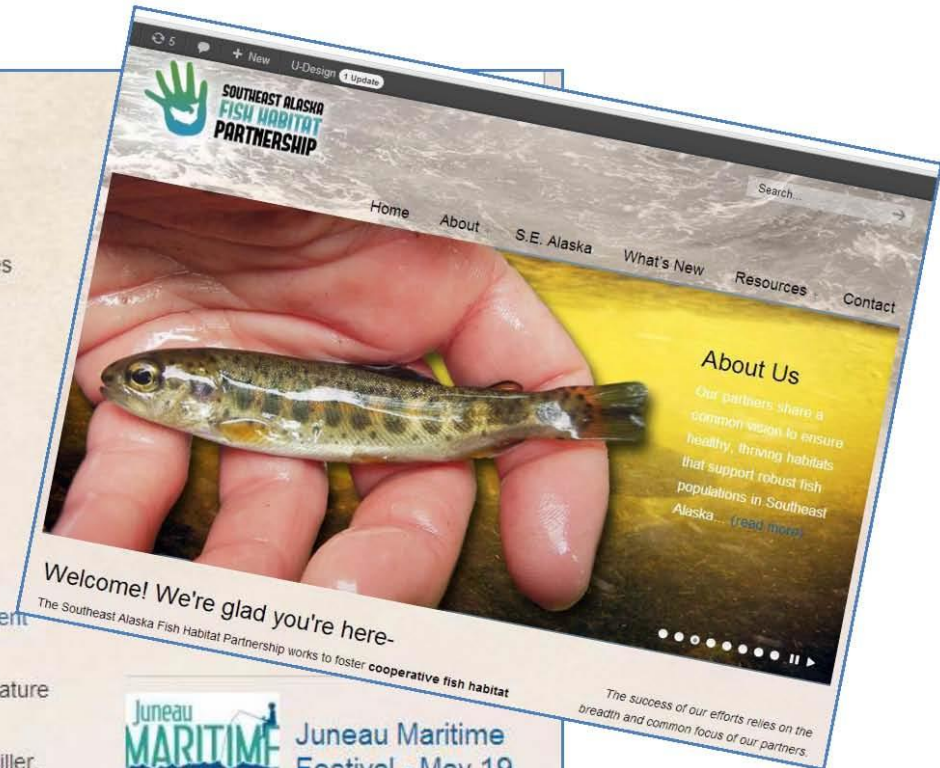
- Alaska Department of Fish and Game's Anadromous Waters Catalog
- Alaska Department of Environmental Conservation's – Alaska's Clean Water Actions (Impaired water bodies/waters to watch)
- Alaska Fish Passage Studies and Resources - provided by ARLIS (Alaska Resources Library and Information Services)
- NOAA's Essential Fish Habitat Mapper
- ShoreZone- Alaska Coastal Inventory and Mapping Project
- Alaska Coastal Rainforest Center
- University of Alaska GIS Library
- North Pacific Landscape Conservation Cooperative

Habitat Assessment Resources

- US Forest Service National Watershed Condition Framework
- Alaska Department of Fish and Game's Alaska fish passage inventory and assessment database
- Coastal Forests and Mountains Ecoregion Assessment for Southeast Alaska (The Nature Conservancy/Audubon Society)
- Assessment of Southeast Alaska's Estuarine and Coastal Ecosystems - Katharine Miller, NMFS Alaska Fisheries Science Center
- An Estuarine Habitat Classification for a Complex Fjordal Island Archipelago - Schoch et al. 2013 Estuaries and Coasts
- A Conservation Action Plan for Estuarine Ecosystems of Southeastern Alaska - The Nature Conservancy, 2011

Assessment Protocols and Agency Guidance Documents

- A user guide for performing stream habitat surveys in Southeast Alaska (Alaska Department of Fish and Game)
- Surface-water data manual for ADF&G's statewide aquatic resources coordination unit (Alaska Department of Fish and Game)



Juneau Maritime
Festival - May 19,
2013

Celebrate Juneau's
maritime history, culture
and commerce at the 4th
Annual Juneau Maritime
Festival[...]



Salmon Production
from the Tongass
National Forest



Southeast Alaska Fish Habitat Partnership

Conservation Priorities:

- Protect fish habitat in freshwater, estuaries and near-shore areas
 - Coordinate efforts to expand Anadromous Waters Catalog and Reservations of Water
 - Facilitate regional prioritization of intact watersheds for higher levels of protection
- Maintain and restore water quality and quantity in the region,
- Restore and enhance fragmented and degraded fish habitats in impacted areas
 - Support region-wide restoration prioritization and planning
 - Align organizational approaches to fish passage at road/stream crossings
 - Facilitate regional adoption of best management practices for restoration, including restoration effectiveness monitoring



Southeast Alaska Fish Habitat Partnership

Funding of Candidate Partnership to Date:

Funded through competitive application to the Alaska Sustainable Salmon Fund. Matching funds secured through Trout Unlimited. \$110,000 in combined support through April 2014

USFWS Coastal Program, \$30,000 (through December 2014)—Funds Coordinator travel, symposia planning, and support services

In-kind support, \$28,000 -- Trout Unlimited (fiscal sponsor), USFWS (WebEx and teleconference services), and Southeast Alaska Watershed Coalition and The Nature Conservancy (symposia co-sponsors)

Future coordination funding uncertain without National FHP support, exploring variety of funding sources:

- AKSSF FY2014 Grant Cycle – opportunity for funding if additional funds become available - \$15,000 matching funds secured through TNC
- National Forest Foundation/USFS – 2014 Community Capacity Stewardship Grant – application in process
- Considering other funding options such as federal partner matching support for long term SEAKFHP coordination services



Thank You!

Any Questions?