



SOUTHEAST ALASKA FISH HABITAT PARTNERSHIP

**Status Report to the
National Fish Habitat Board
June 25, 2013**

SEAKFHP Board Book Materials

- Presentation agenda
- Factsheet
- Status Report





SOUTHEAST ALASKA FISH HABITAT PARTNERSHIP



Introductions:

- **Neil Stichert** - USFWS Juneau Field Office, SEAKFHP Steering Committee Co-chair
- **Jess Kayser** - Executive Director, Southeast Alaska Watershed Coalition SEAKFHP Steering Committee member
- **Tim Bristol** - Alaska Director, Trout Unlimited, SEAKFHP fiscal sponsor
- **Cindy Hartmann Moore** – NMFS Alaska Region, Habitat Conservation Division, SEAKFHP Steering Committee member and SEAKFHP Science and Data Committee Co-chair



SOUTHEAST ALASKA
FISH HABITAT
PARTNERSHIP



Presentation Objectives

- Provide brief overview of the candidate Southeast Alaska Fish Habitat Partnership (SEAKFHP)
- Share geographically and regionally unique attributes of Southeast Alaska
- Demonstrate how the SEAKFHP has risen to become a robust candidate Partnership
- Introduce our draft strategic plan and intent to request formal recognition in Fall 2013



Southeast Alaska Fish Habitat Partnership

Who We Are

Federal, state and local governments
Tribal entities
Non-profit organizations
Private individuals



Structure and Capacity

Part-time coordinator-- Debbie Hart

Supporting partnership co-chairs

11-member Steering Committee

Science and Data Committee

Other ad hoc committees as needed



SOUTHEAST ALASKA FISH HABITAT PARTNERSHIP

Current Partners

- U.S. Fish and Wildlife Service
- NOAA National Marine Fisheries
- U.S. Forest Service
- Alaska Department of Fish and Game
- Alaska Department of Environmental Conservation
- Central Council Tlingit Haida Indian Tribes of Alaska
- City and Borough of Yakutat
- Southeast Alaska Watershed Coalition
- Trout Unlimited
- The Nature Conservancy
- Sitka Conservation Society
- K Koski



Southeast Alaska

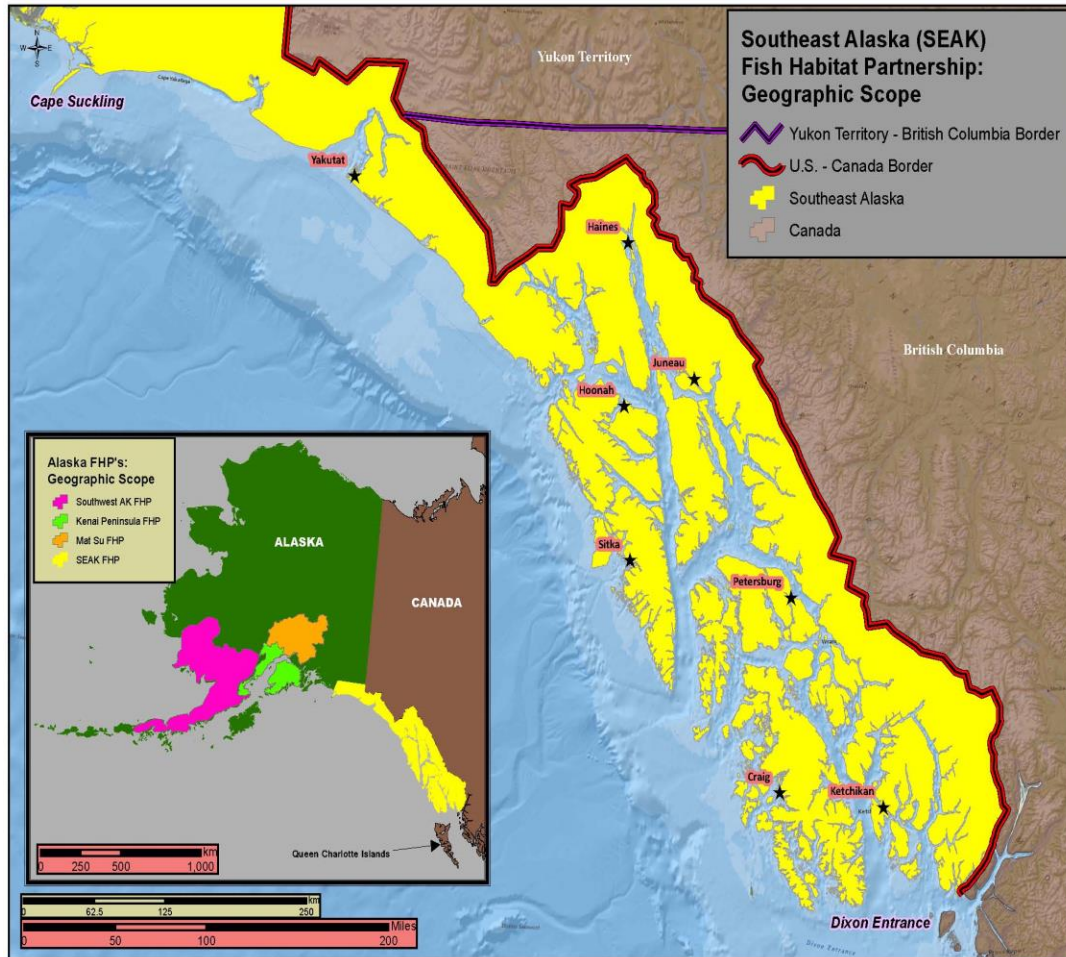
A complex landscape and biogeography



- Tides -4 to +21 feet
- 30- 160" of rainfall
- >1,000 named islands
- > 5,000 mapped anadromous fish streams



SEAKFHP Geographic Scope



Watersheds and waterways connecting Icy Bay to Dixon Entrance

Encompasses a land/water area 120 miles by 500 miles

Lakes, rivers, estuaries and nearshore marine areas

People and Economy of Southeast

- 33 communities- Only three connected to mainland road system
- Multi-cultural- Tlingit, Haida, Tsimshian
- 70% of population lives in Juneau, Ketchikan, and Sitka
- 1,500,000 tour visitors each year



Economy:

- Fishing
- Tourism
- Government
- Mining
- Timber Harvest & Silviculture



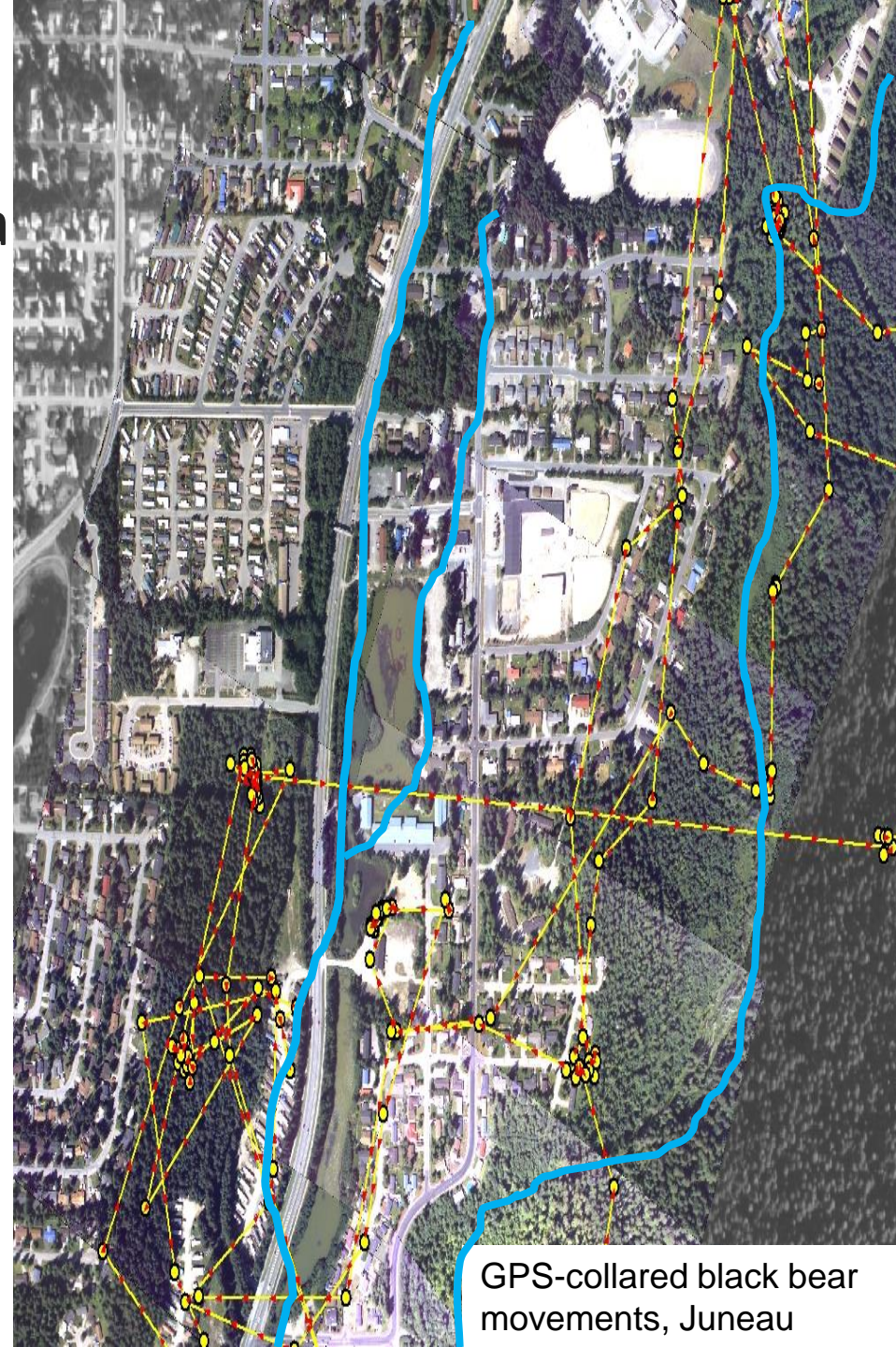
A Region of People With Strong Connections to Fish

- 96% of Alaskans surveyed say salmon are essential to the Alaskan way of life.
- Human Use of Salmon
 - Nearly 90% of rural households in Southeast Alaska use salmon.
 - On average, a rural resident uses 75 pounds of pink, chum, coho, chinook, and sockeye salmon
- Robust subsistence, sport and commercial fisheries support this economy with use values exceeding \$466,000,000 annually in Southeast.



Aquatic Habitat Challenges in Southeast Alaska

- Development encroachment on riparian corridors and streams
- Stormwater discharge into salmon streams
- Weak regulatory climate for wetland and stream protection
- Fish passage barriers (1,200+)
- Post industrial logging landscape- 400,000 acres – state, federal, and private
- Existing and expanded mining activities and exploration
- Climate change



GPS-collared black bear movements, Juneau

Why Another Partnership?

- Complex geography
- Professional expertise dispersed across the region
- Interjurisdictional management of fish habitat, riparian areas, flows, watersheds and forestlands
- High public interest in maintaining fisheries
- Declining budgets
- NFHP construct gets people to the table

“Our partners share a common vision to ensure healthy, thriving habitats which support all life stages of Southeast Alaska resident, anadromous, estuarine and marine dependent fishes across their historical range.”





Southeast Alaska Fish Habitat Partnership

Current Core Functions

- Grow diversity and capacity of partnership
- Develop organizational strength and perseverance
- Provide services to partners and Southeast communities
- Develop regionally relevant fish habitat conservation strategies



Southeast Alaska Fish Habitat Partnership

Partner Services

- Foster interagency & regional communication
- Facilitate regional funding opportunities
- Provide project technical review and endorsement
- Support regional assessment and data sharing
- Coordinate relevant conservation strategies for protection, enhancement, and restoration of fish habitat
- Provide annual symposium and event facilitation





Southeast Alaska Fish Habitat Partnership

Funding of Candidate Partnership to Date:

Funded through competitive application to the Alaska Sustainable Salmon Fund. Matching funds secured through Trout Unlimited. \$110,000 in combined support through April 2014

USFWS Coastal Program (pending)—Funds Coordinator travel, symposia planning, and support services

In-kind support-- Trout Unlimited (fiscal sponsor), USFWS (WebEx and teleconference services), and Southeast Alaska Watershed Coalition (symposia co-sponsor)

Future coordination funding uncertain without National FHP support



Southeast Alaska Fish Habitat Partnership

Strategic Plan Outline

STRATEGIC FRAMEWORK 2013-2017
DRAFT VERSION 1.0 XXXXXXXX XX, 2013



SOUTHEAST ALASKA FISH HABITAT PARTNERSHIP



NATIONAL
FISH HABITAT
PARTNERSHIP

TABLE OF CONTENTS

Executive Summary	X
HISTORY	XX
GOVERNANCE AND ORGANIZATION	XX
IDENTIFICATION OF CRITICAL THREATS	XX
GEOGRAPHIC SCOPE	XX
Boundaries of the Partnership	XX
Habitats	XX
Freshwater/riparian areas	XX
Bays and Estuaries	XX
Nearshore Habitat	XX
VISION, MISSION, AND PRIORITIES	XX
Vision	XX
Mission	XX
Core Functions	XX
• Growing the partnership	XX
• Strengthening perseverance of the partnership long term	XX
• Partner Services	XX
• Regional conservation strategies	XX
Conservation Priorities	XX
?ex Protection of intact watersheds	XX
? ex... Water Quality and Quantity	XX
XXXXXXXXXXXXXXXXXXXX	XX
PARTNERSHIPS	XX
The National Fish Habitat Action Plan and the SEAKFHP	XX
Jurisdictional Responsibilities	XX
Partner Roles and Responsibilities	XX
Communicating with Partners	XX
SCIENTIFIC ASSESSMENT	XX
BUDGET	XX
APPENDICES	XX





Southeast Alaska Fish Habitat Partnership

Potential Strategic Conservation Actions:

- Support region-wide restoration prioritization and planning
- Coordinate efforts to expand Anadromous Waters Catalog and Reservations of Water
- Facilitate regional prioritization of intact watersheds for higher levels of protection
- Align organizational approaches to fish passage at road/stream crossings
- Facilitate regional adoption of best management practices for restoration, including restoration effectiveness monitoring



Southeast Alaska Fish Habitat Partnership

Web Site and Resources Archive at www.seakfhp.org

Regional Data Repositories and Resource Providers

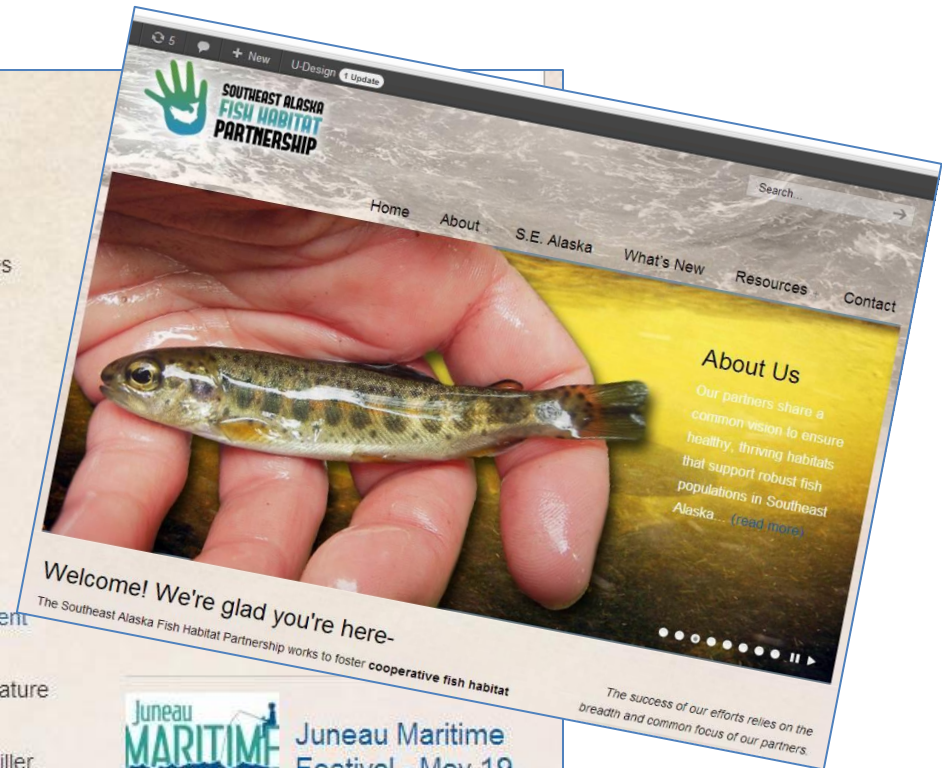
- Alaska Department of Fish and Game's Anadromous Waters Catalog
- Alaska Department of Environmental Conservation's – Alaska's Clean Water Actions (Impaired water bodies/waters to watch)
- Alaska Fish Passage Studies and Resources - provided by ARLIS (Alaska Resources Library and Information Services)
- NOAA's Essential Fish Habitat Mapper
- ShoreZone- Alaska Coastal Inventory and Mapping Project
- Alaska Coastal Rainforest Center
- University of Alaska GIS Library
- North Pacific Landscape Conservation Cooperative

Habitat Assessment Resources

- US Forest Service National Watershed Condition Framework
- Alaska Department of Fish and Game's Alaska fish passage inventory and assessment database
- Coastal Forests and Mountains Ecoregion Assessment for Southeast Alaska (The Nature Conservancy/Audubon Society)
- Assessment of Southeast Alaska's Estuarine and Coastal Ecosystems - Katharine Miller, NMFS Alaska Fisheries Science Center
- An Estuarine Habitat Classification for a Complex Fjoridal Island Archipelago - Schoch et al. 2013 Estuaries and Coasts
- A Conservation Action Plan for Estuarine Ecosystems of Southeastern Alaska - The Nature Conservancy, 2011

Assessment Protocols and Agency Guidance Documents

- A user guide for performing stream habitat surveys in Southeast Alaska (Alaska Department of Fish and Game)
- Surface-water data manual for ADF&G's statewide aquatic resources coordination unit (Alaska Department of Fish and Game)



Juneau Maritime
Festival - May 19,
2013

Celebrate Juneau's
maritime history, culture
and commerce at the 4th
Annual Juneau Maritime
Festival[...]



Salmon Production
from the Tongass
National Forest



Southeast Alaska Fish Habitat Partnership

Organizational Documents at www.seakfhp.org

Documents


[Home](#) → [Documents](#)

- [SEAKFHP Fact Sheets and Overview Presentations](#)
- [SEAKFHP Governance Documents](#)
- [SEAKFHP Steering Committee Meeting Agendas and Summaries](#)

Search for:


[Search](#)

Recent Posts




Southeast Alaska Watershed Symposium - November 4-6, 2013

Southeast Alaska Watershed Symposium
SAVE THE DATE Join us
November 4th, 5th and 6th 2013! The Sy[...]



SEAKFHP sponsors salmon contests at the Juneau Maritime Festival

The Southeast Alaska Fish Habitat Partnership sponsored three food events at the Juneau Maritime Fes[...]



Juneau Maritime Festival - May 19, 2013

Celebrate Juneau's

SEAKFHP Steering Committee Meeting Agendas and Summaries

• May 2012 SC Agenda	May 2012 SC Summary
• June 2012 SC Agenda	June 2012 SC Summary
• August 2012 SC Agenda	August 2012 SC Summary
• September 2012 SC Agenda	September 2012 SC Summary
• October 2012 SC Agenda	October 2012 SC Summary
• November 2012 SC Agenda	November 2012 SC Summary
• December 2012 SC Agenda	December 2012 SC Summary
• January 2013 SC Agenda	January 2012 SC Summary
• February 2013 SC Agenda	February 2013 SC Summary
• May 2013 SC Agenda	May 2013 SC Summary (draft pending review)
• June 2013 SC Agenda	

- [SEAKFHP Subcommittee Documents and Meeting Summaries](#)
- [National Fish Habitat Board Correspondence](#)
- [National Fish Habitat Excellence Program](#)
- [SEAKFHP Strategic Planning Documents](#)



Southeast Alaska Fish Habitat Partnership

Steering Committee Members

- Mark Kaelke, Trout Unlimited – SEAKFHP Co-chair
- Neil Stichert*, US Fish and Wildlife Service, Juneau Field Office – SEAKFHP Co-chair
- Cindy Hartmann Moore*, NOAA NMFS Alaska Region, Office of Habitat Conservation (S&D Co-chair)
- Sheila Jacobson*, USFS Tongass National Forest
- Roger Harding*, Alaska Department of Fish and Game
- Brock Tabor*, Alaska Department of Environmental Conservation
- Norman Cohen, The Nature Conservancy
- Jessica Kayser, Southeast Alaska Watershed Coalition
- Raymond Paddock , Central Council Tlingit and Haida Indian Tribes of Alaska
- Bill Lucey, City and Borough of Yakutat
- K Koski*, At-large seat

Science and Data Committee Members*

- Jeff Nichols, Alaska Department of Fish and Game (S&D Co-chair)
- Gretchen Pikul, Alaska Department of Environmental Conservation
- Julianne Thompson, USFS Tongass National Forest
- Dave D'Amore, USFS Pacific Northwest Research Station , Juneau Forestry Sciences Laboratory
- Christine Woll, The Nature Conservancy
- Brad Ryan, Takshanuk Watershed Council
- Katharine Miller, NOAA NMFS Alaska Fisheries Science Center
- Allison Bidlack, Alaska Coastal Rainforest Center
- Kim Homan, University of Alaska GIS Library
- Scott Harris, Sitka Conservation Society
- Bill Hanson (USFWS) liaison to the North Pacific Landscape Conservation Cooperative

A few words from our partners...



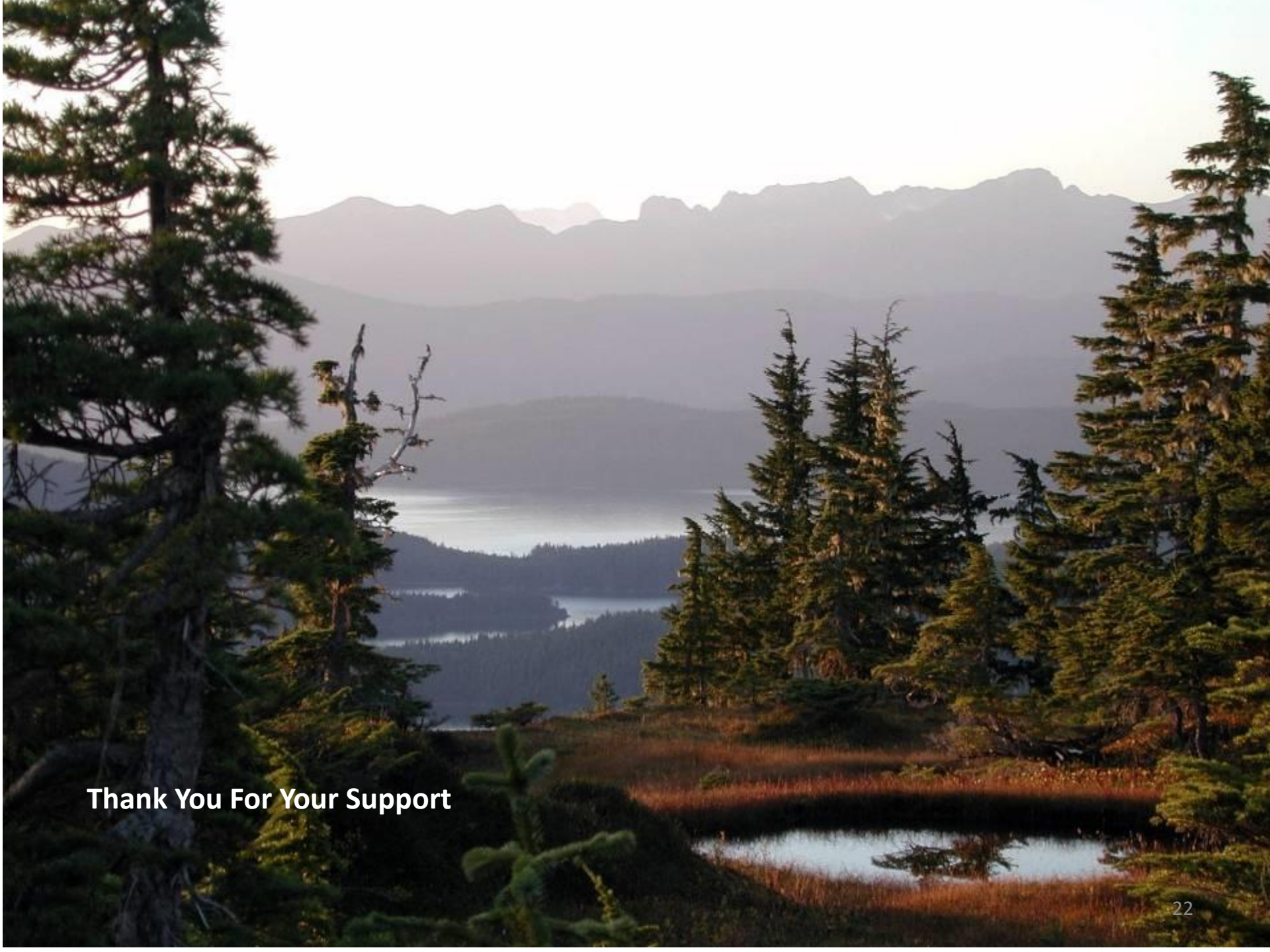
Jess Kayser - Executive Director, Southeast Alaska Watershed Coalition, SEAKFHP Steering Committee member



Tim Bristol - Alaska Director, Trout Unlimited, SEAKFHP fiscal sponsor



Cindy Hartmann Moore – NMFS Alaska Region, Habitat Conservation Division, SEAKFHP Steering Committee member and SEAKFHP Science and Data Committee Co-chair

A scenic landscape photograph showing a mountain range in the background under a soft, hazy sky. In the foreground, there are several evergreen trees, some of which are partially obscured by a large, dark, rocky outcrop. A small, calm body of water, possibly a pond or a small lake, is visible in the lower right foreground, reflecting the surrounding trees and the sky. The overall atmosphere is peaceful and serene.

Thank You For Your Support