



# Working together to collect environmental data in transboundary waters

Alaska Department of Environmental Conservation  
Division of Water  
Alaska Monitoring and Assessment Program  
Terri Lomax



# Division of Water

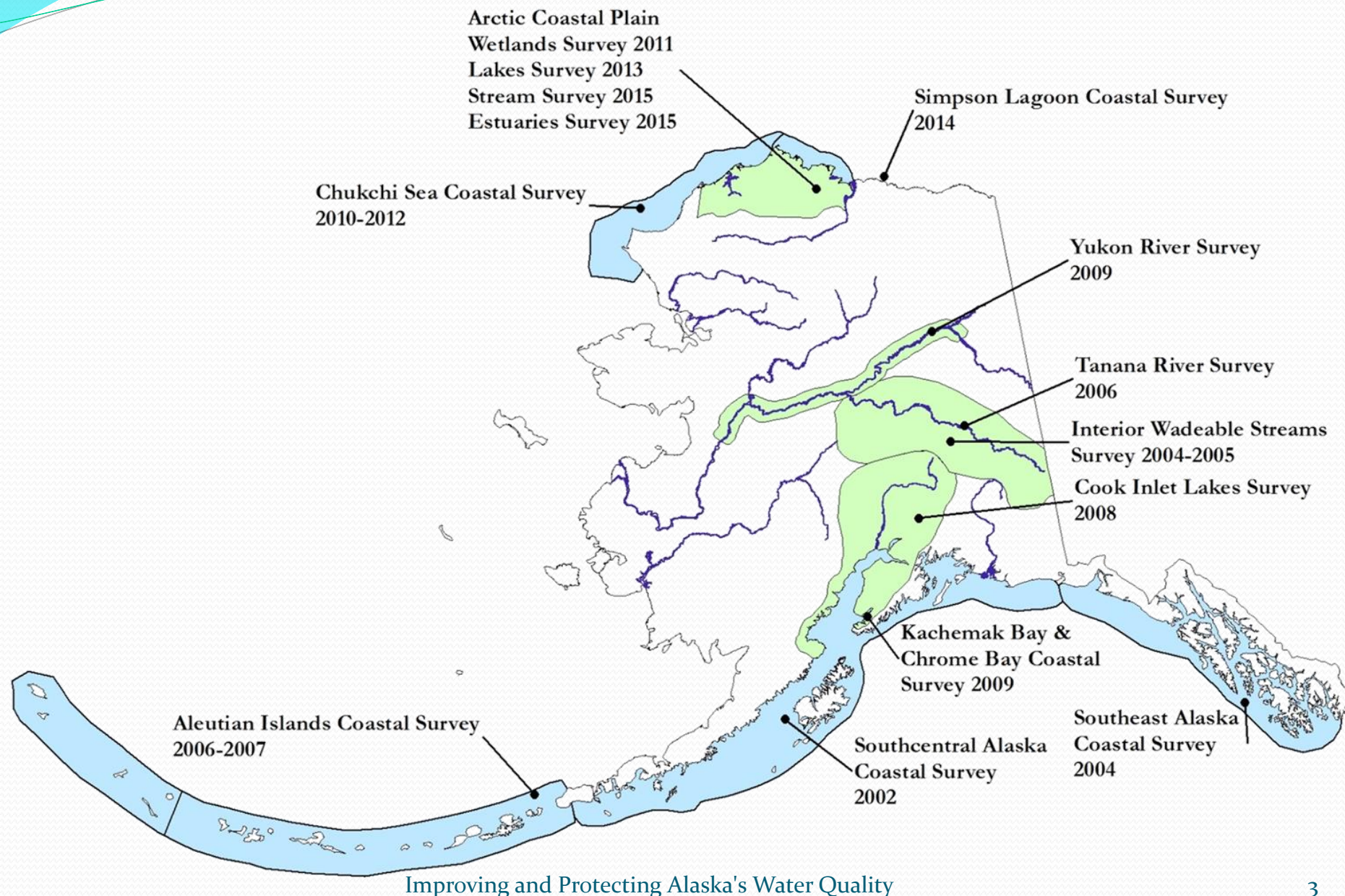
## Mission Statement:

- Improve and protect water quality

## How?

- Establishes standards for water cleanliness
- Regulates discharges to waters and wetlands
- Provides financial assistance for water and wastewater facility construction and waterbody assessment and remediation
- Trains, certifies, and assists water and wastewater system operators
- **Monitors and reports on water quality**

# Alaska Monitoring and Assessment Program



# Implementation through Partnerships

- Regional approach
- Early research and planning
- Partnerships are critical
  - University of Alaska
  - Tribal involvement
  - Community involvement
  - State and Federal agencies
- Long term relevance (repeated studies)
- Focus Areas



# Examples of Past Collaborations

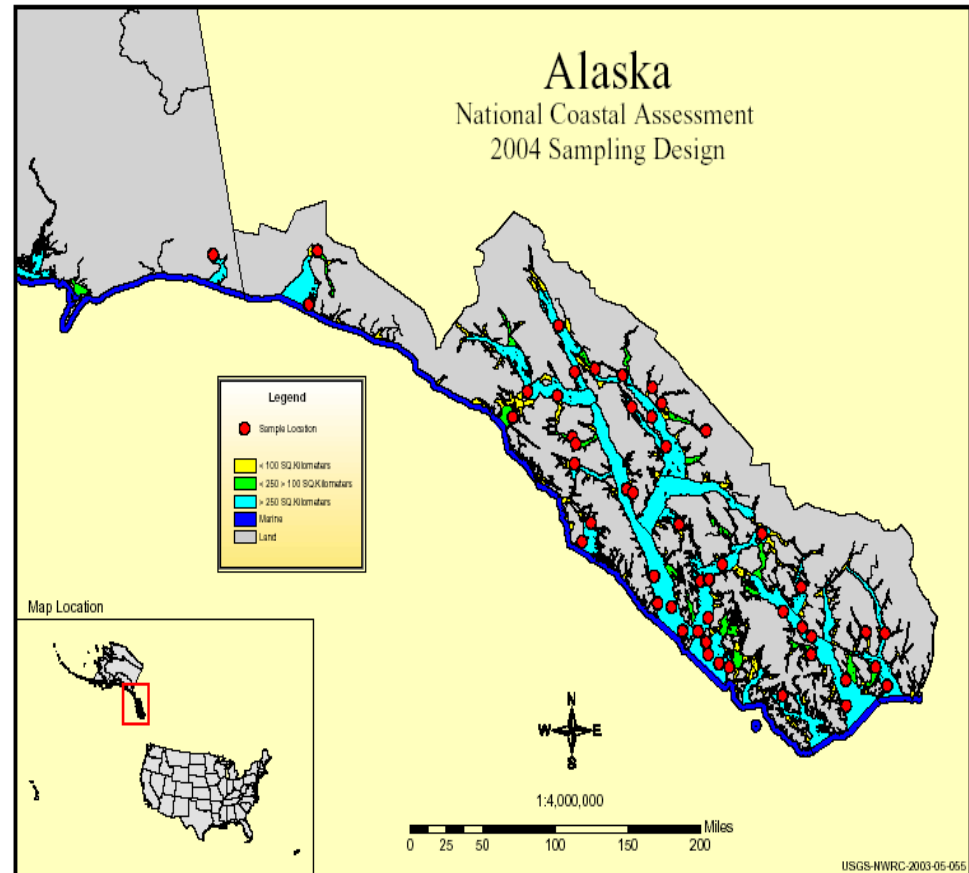
- Design help
- Shared equipment
- Lodging
- Shared staff
- Data analysis
- Collection of additional parameters
- Reduced funding
- Combined funding
- Joint proposals





# Where next?

- Southeast Alaska
- Rare and perfect coalescence of program and needs
- Starting with a lakes survey in 2017
- Additional targeted sites in transboundary watersheds
  - Alsek
  - Stikine
  - Taku
  - Unuk



# Why Southeast Alaska?

- Previous AKMAP survey, detecting changes
- Establish baseline for lakes, streams/rivers
- Increase our understanding of transboundary pollutants
- Comparison with regions in NARS
- A lot of work from other entities occurring

# Memorandum of Understanding

The State of Alaska and British Columbia signed an MOU in November of 2015. One key agreement in the MOU is the establishment of a Bilateral Working Group on the Protection of Transboundary Waters.

The working group is tasked with:

- Implement a joint water quality monitoring program
- Establish reciprocal procedures in environmental assessments and permitting processes
- Develop opportunities for Tribes, First Nations, and interested communities to access information and provide input
- Communicate and share information
- Seek alternate sources of funding

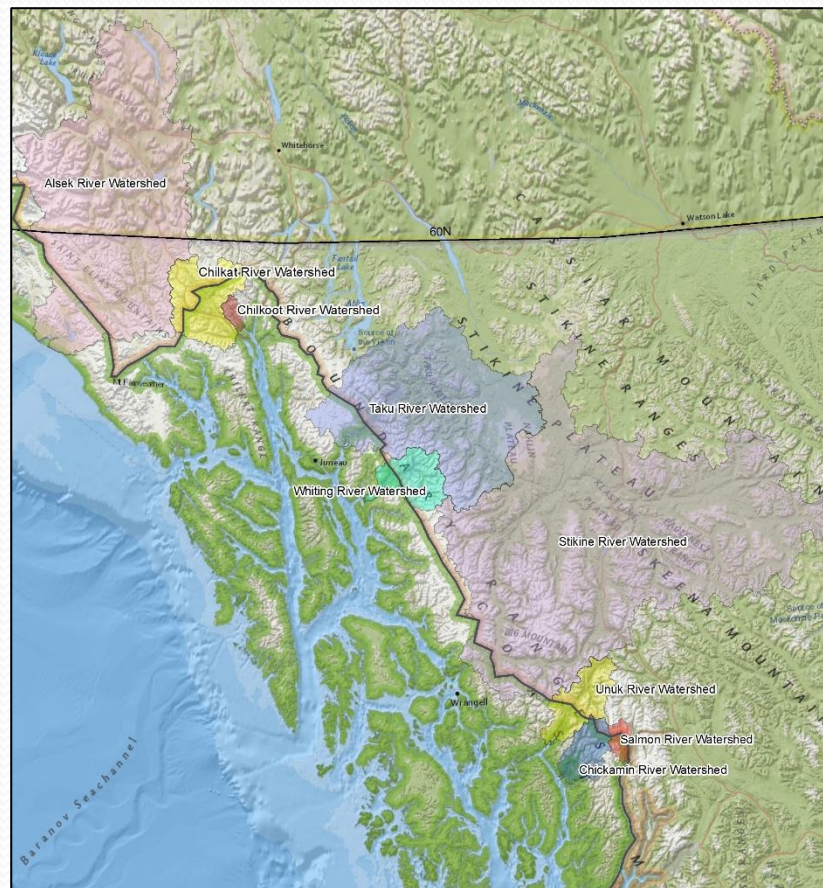


# Statement of Cooperation-draft

Establish collaboration on protection especially of the Taku, Stikine, Unuk and Alsek watersheds “from the risk of substantial adverse impacts from the development of mines and other significant commercial development activity...”

Increased communication

- Reviewed by Tribes, Citizens Environment Groups, Agencies
- Draft submitted to BC
- No deadline



# Workshop

- Current monitoring activities
- Traditional Ecological Knowledge
- Survey Results
- Prioritizing monitoring needs
- Areas of collaboration

## Transboundary Environmental Data Workshop

April 15, 2016  
Westmark Baranof Hotel, Treadwell Room  
Juneau, AK

**Goal:** Identify areas of collaboration in the collection, summary and distribution of water quality and quantity data in Transboundary Waters

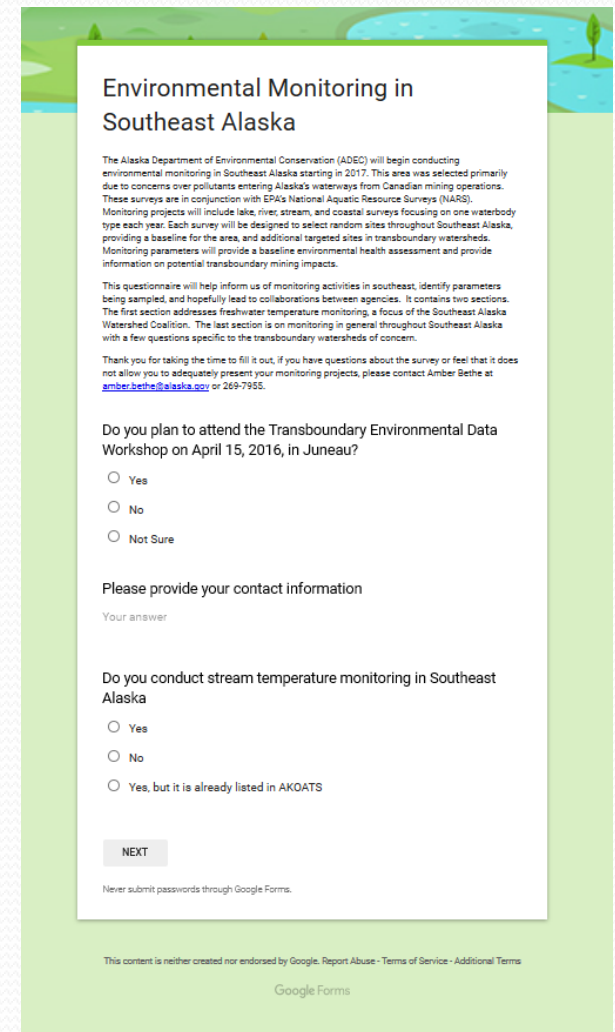
**Pre-workshop monitoring survey:** <http://bit.ly/1S8kmi5>

	Topic	Lead
8:00-8:15	Introduction	Barbara Blake & Michelle Hale, Office of the Governor and Alaska Dept. of Environmental Conservation
8:15-8:45	AKMAP overview and future Southeast Alaska environmental monitoring	Amber Bethe, Alaska Dept. of Environmental Conservation
8:45-10:00	Review of Southeast Alaska Monitoring Programs:	
	Transboundary rivers baseline water quality monitoring project	Jennifer Hanlon, Central Council of Tlingit & Haida Indian Tribes of Alaska
	Aquatic studies for Alaska's hard rock mines.	Kate Kanouse, Alaska Dept. of Fish & Game
	USGS water quantity and quality data collection in Southeast Alaska.	Janet Curran, U.S. Geological Survey
	Environmental monitoring in British Columbia	Robyn Roome, British Columbia Ministry of the Environment
10:00-10:30	Break	
10:30-11:30	Integrating traditional ecological knowledge	John Morris & Linda Kruger, Douglas Island Association and U.S. Forest Service
11:30-11:45	Quality assurance plans and data integrity	Doug Kolwaite, Alaska Dept. of Environmental Conservation
11:45-1:15	Lunch	
1:15-1:30	Monitoring survey results	Amber Bethe, Alaska Dept. of Environmental Conservation
1:30-2:00	Current and historic environmental monitoring data	Terry Schwarz & Gina Shirey, Alaska Departments of Natural Resources and Environmental Conservation
2:00-2:45	Group Discussion: Prioritizing monitoring needs for transboundary waters	Terri Lomax, Alaska Dept. of Environmental Conservation
2:45-3:15	Break	
3:15-4:00	Group discussion: Areas of collaboration	Amber Bethe, Alaska Dept. of Environmental Conservation
4:00-5:00	Where do we go from here?	Terri Lomax, Alaska Dept. of Environmental Conservation

# Monitoring Survey

It contains two sections. The first section addresses freshwater temperature monitoring, a focus of the Southeast Alaska Watershed Coalition. The last section is on monitoring in general with a few questions specific to the transboundary watersheds of concern.

To participate in the survey go to:  
<http://bit.ly/1S8kmi5>.



The screenshot shows a Google Forms survey titled "Environmental Monitoring in Southeast Alaska". The form is set against a light green background with a decorative header image of a river and trees. The text of the form includes:

**Environmental Monitoring in Southeast Alaska**

The Alaska Department of Environmental Conservation (ADEC) will begin conducting environmental monitoring in Southeast Alaska starting in 2017. This area was selected primarily due to concerns over pollutants entering Alaska's waterways from Canadian mining operations. These surveys are in conjunction with EPA's National Aquatic Resource Surveys (NARS). Monitoring projects will include lake, river, stream, and coastal surveys focusing on one waterbody type each year. Each survey will be designed to select random sites throughout Southeast Alaska, providing a baseline for the area, and additional targeted sites in transboundary watersheds. Monitoring parameters will provide a baseline environmental health assessment and provide information on potential transboundary mining impacts.

This questionnaire will help inform us of monitoring activities in southeast, identify parameters being sampled, and hopefully lead to collaborations between agencies. It contains two sections. The first section addresses freshwater temperature monitoring, a focus of the Southeast Alaska Watershed Coalition. The last section is on monitoring in general throughout Southeast Alaska with a few questions specific to the transboundary watersheds of concern.

Thank you for taking the time to fill it out, if you have questions about the survey or feel that it does not allow you to adequately present your monitoring projects, please contact Amber Bethe at [amber.bethe@alaska.gov](mailto:amber.bethe@alaska.gov) or 269-7955.

Do you plan to attend the Transboundary Environmental Data Workshop on April 15, 2016, in Juneau?

☐ Yes  
☐ No  
☐ Not Sure

Please provide your contact information

Your answer

Do you conduct stream temperature monitoring in Southeast Alaska

☐ Yes  
☐ No  
☐ Yes, but it is already listed in AKOATS

**NEXT**

Never submit passwords through Google Forms.

This content is neither created nor endorsed by Google. Report Abuse - Terms of Service - Additional Terms

Google Forms

# Workshop- Dual Purposes

- Transboundary-  
inform who, what,  
and where  
monitoring is  
occurring to  
collaborate and share  
resources
- EPA NARS-identify  
potential partners  
and needs for a  
regional baseline  
survey





## Questions?

# Haw'aa/Gunalchéesh/Tsin'aen/Taikuu/Thank You

Terri Lomax

Alaska Monitoring and Assessment Program

(907) 269-7635

[Terri.Lomax@alaska.gov](mailto:Terri.Lomax@alaska.gov)

<http://dec.alaska.gov/water/wqsar/monitoring/AKMAP.htm>