

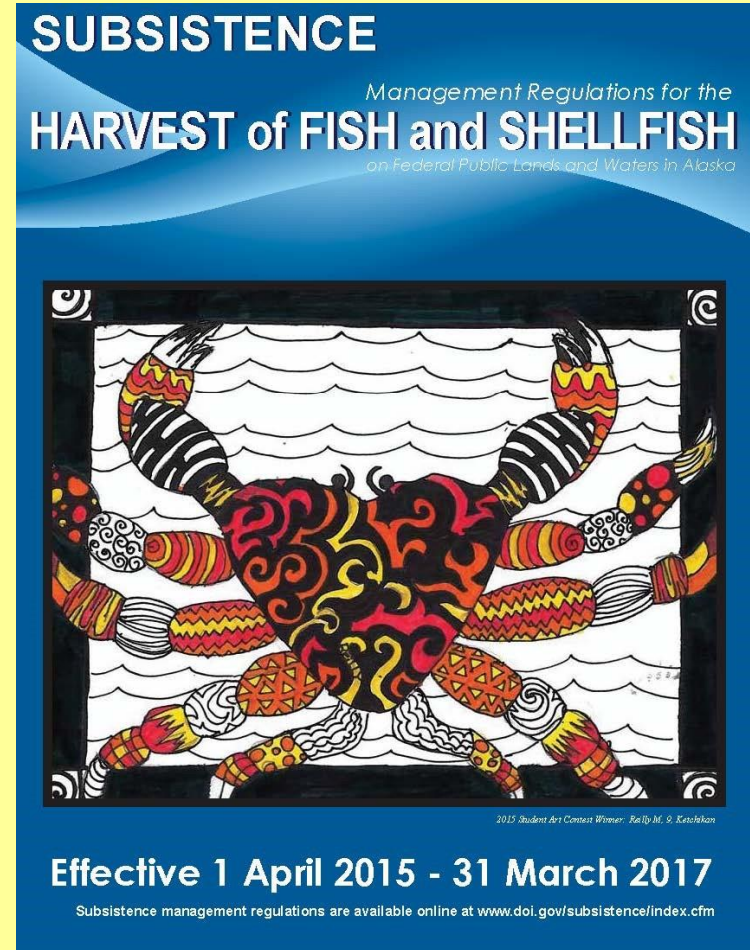
Federal Subsistence and Klawock River/Lake



Presented at the Klawock
Sockeye Stakeholder Meeting
November 14-15, 2017

Federal Subsistence Fisheries

**Governed by
Regulations
found in 36
CFR part 242
and 50 CFR
part 100.**

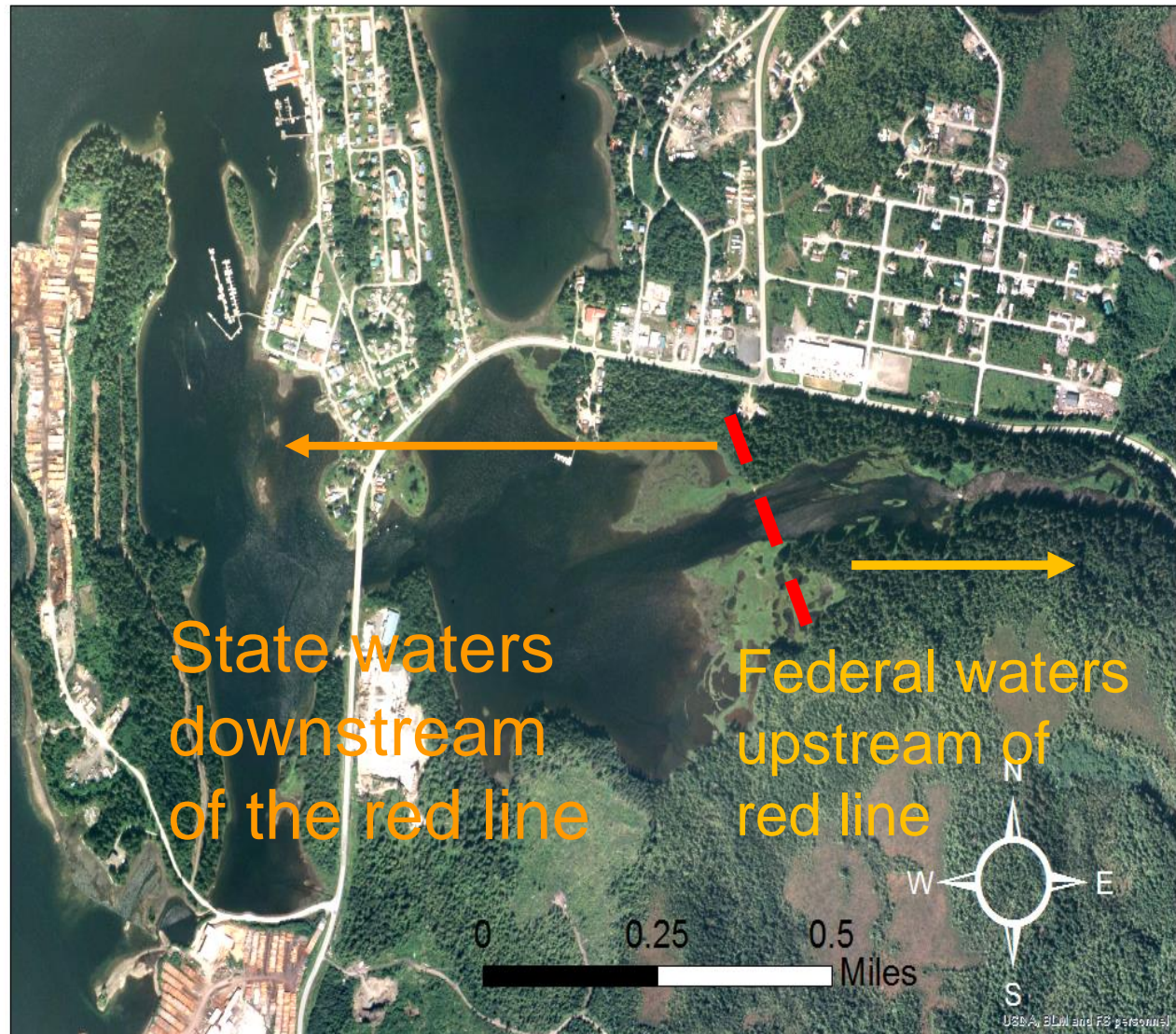


Prince of Wales Winter Steelhead (FFSE06)

FWS Form 3-2020 BSV 10713

Applicability of Federal Regulations

- Regulations apply on all Federal public lands and navigable/non-navigable inland waters, except marine waters, within and adjacent to the exterior boundaries of the Tongass National Forest, including Admiralty Island and Misty Fjords National Monuments.
- Waters above the mean high tide mark would fall in this description.
- Although the surrounding lands are private, Federal fishing rules apply because they are encompassed within the exterior boundaries of the Tongass.



Fed. Regs related to Klawock

- Harvest is limited to rural residents living south of Sumner Strait and West of Clarence Strait and Kashevaroff Passage.
- If a harvest limit is not otherwise listed for Sockeye Salmon in this section, the harvest limit for Sockeye Salmon is the same as provided for in adjacent State subsistence or personal use fisheries. So, **20 sockeye daily per household** and **no annual limit.**

Fed. Regs related to Klawock cont.

- You may not accumulate Federal subsistence harvest limits authorized in the Southeastern Alaska Area with any harvest limits authorized under any State of Alaska fishery, except you can harvest State sport fishing limits as long as they do not occur on the same day.**

Fed. Regs related to Klawock cont.



- **Unless otherwise specified, allowable gear for salmon or steelhead is restricted to gaffs, spears, gillnets, seines, dip nets, cast nets, handlines or rod and reel.**

Subsistence Fishing Gear

Sockeye, Pink, and Chum Salmon

Gaff, Spear, Gillnet, Seines, Dip nets, Cast nets, Handlines, Rod & Reel

Coho Salmon

Dip net, Spear, Gaff, Handline, and Rod & Reel

- The Klawock River drainage is closed to the use of seines and gillnets during July and August.

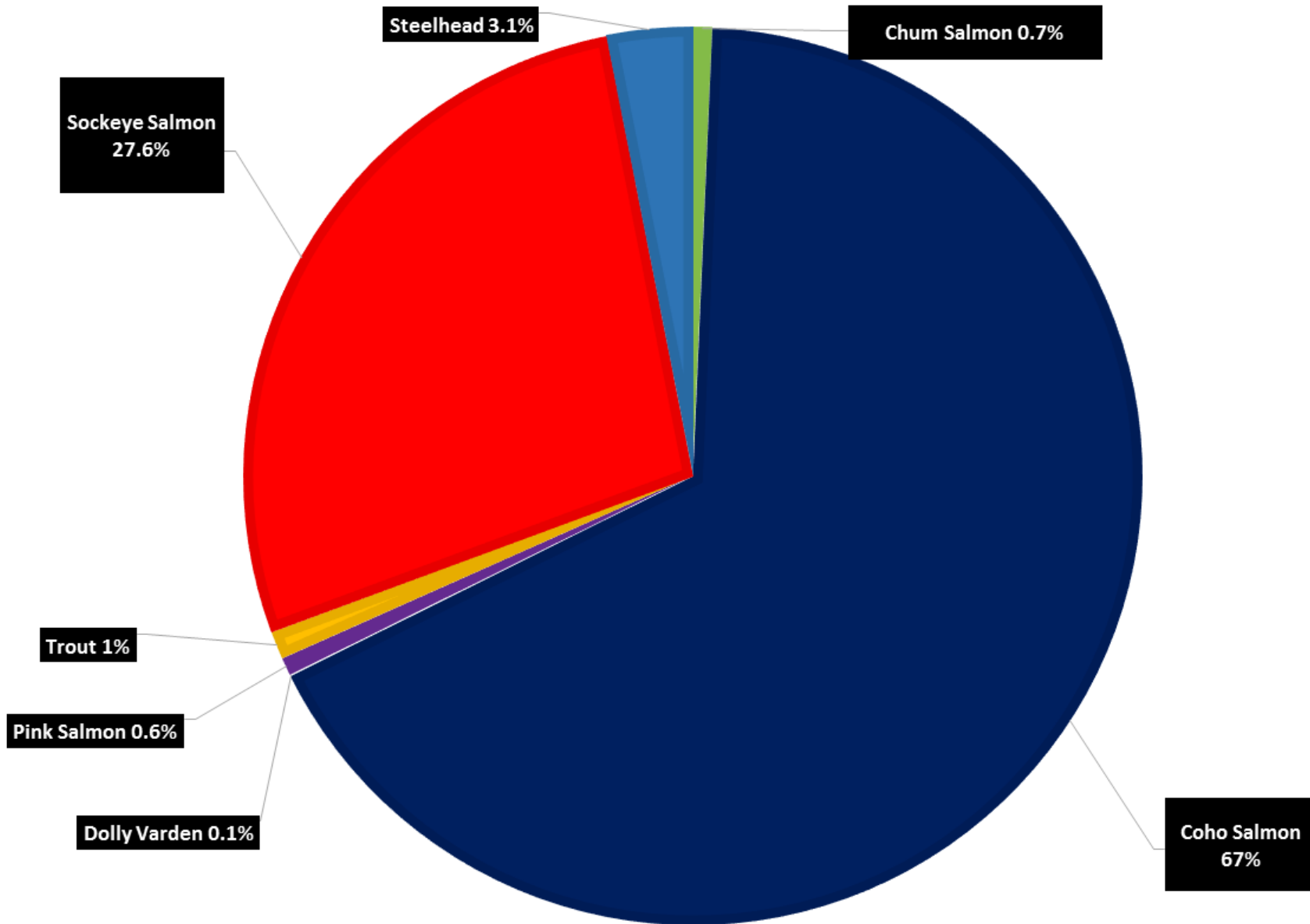


Incidental Harvest is OK

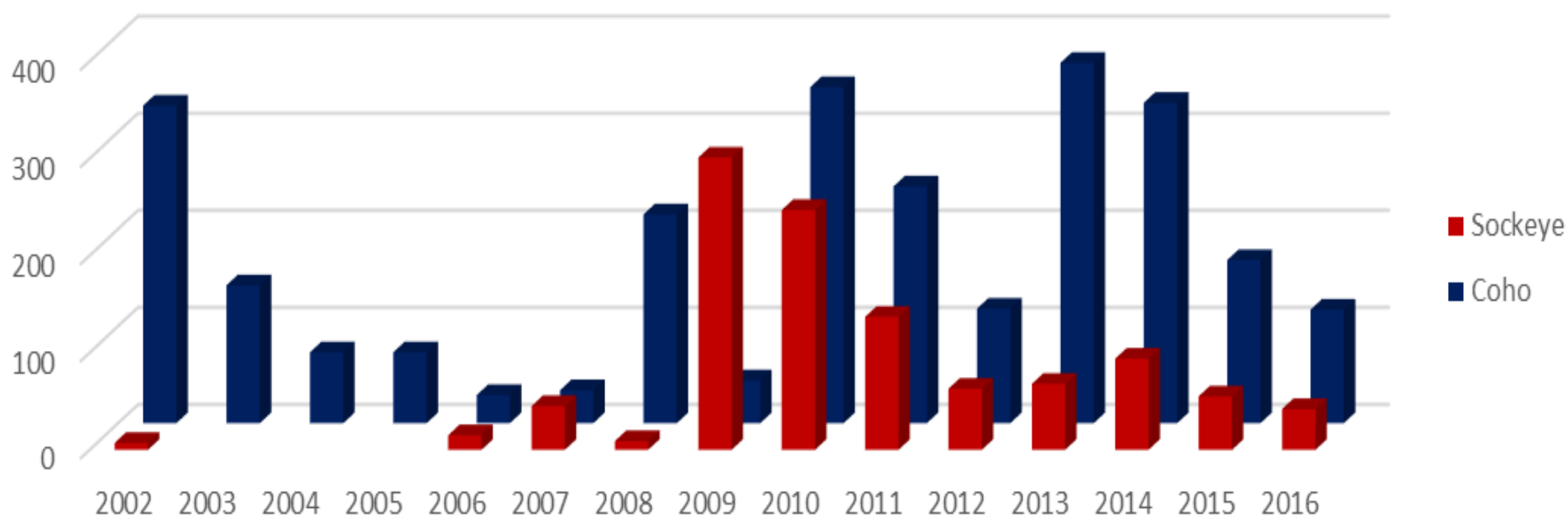


KLAWOCK FEDERAL HARVEST BY SPECIES

Chum Coho Dolly Varden Pink Rainbow Trout Sockeye Steelhead Trout



Federal subsistence harvests from Klawock River/Lake, 2002-2016



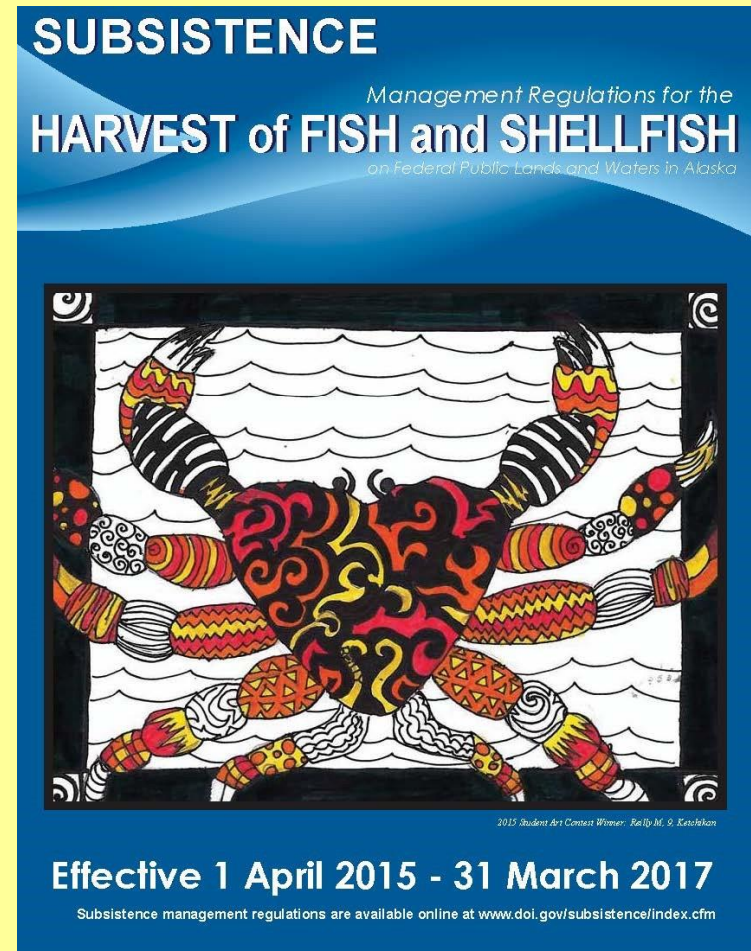
How to change Federal Regulations

- Federal subsistence fishing regulations are governed by the Federal Subsistence Board.
- Fisheries regulatory cycles are bi-annual with the next proposal period in 2018.



Federal Subsistence Fisheries

- ◆ Proposals to change regulations submitted in March.
- ◆ Proposals reviewed by Federal staff to provide recommendation to Southeast Alaska Subsistence Regional Advisory Council (SEASRAC).
- ◆ SEASRAC will meet **in ??? in September** providing recommendation to Federal Subsistence Board (FSB).
- ◆ FSB meets in January 2019 to make final ruling on proposals.





LEARN FROM THE EXPERTS.

?'s